



athena

let's free your potential

INSTALLATION AF TDP EXCHANGE KLIENT

Athena IT-Group
Hovedafdeling
Søndergård Alle 4
DK-6500 Vojens
Tlf.: +45 74 53 15 14
Fax: +45 74 53 14 81

Athena IT-Group
Fyn
Munkersvej 1
DK-5230 Odense M
Tlf.: +45 70 25 30 30
Fax: +45 66 13 93 85

Athena IT-Group
Sjælland
Smedevænget 16A
DK-4700 Næstved
Tlf.: +45 55 77 83 83
Fax: +45 55 77 92 12

Athena IT-Group GmbH
Germany
Walzenmühle - Neustadt 16
DE-24939 Flensburg
Fon: +49 461 14104 0
Fax: +49 461 14104 44

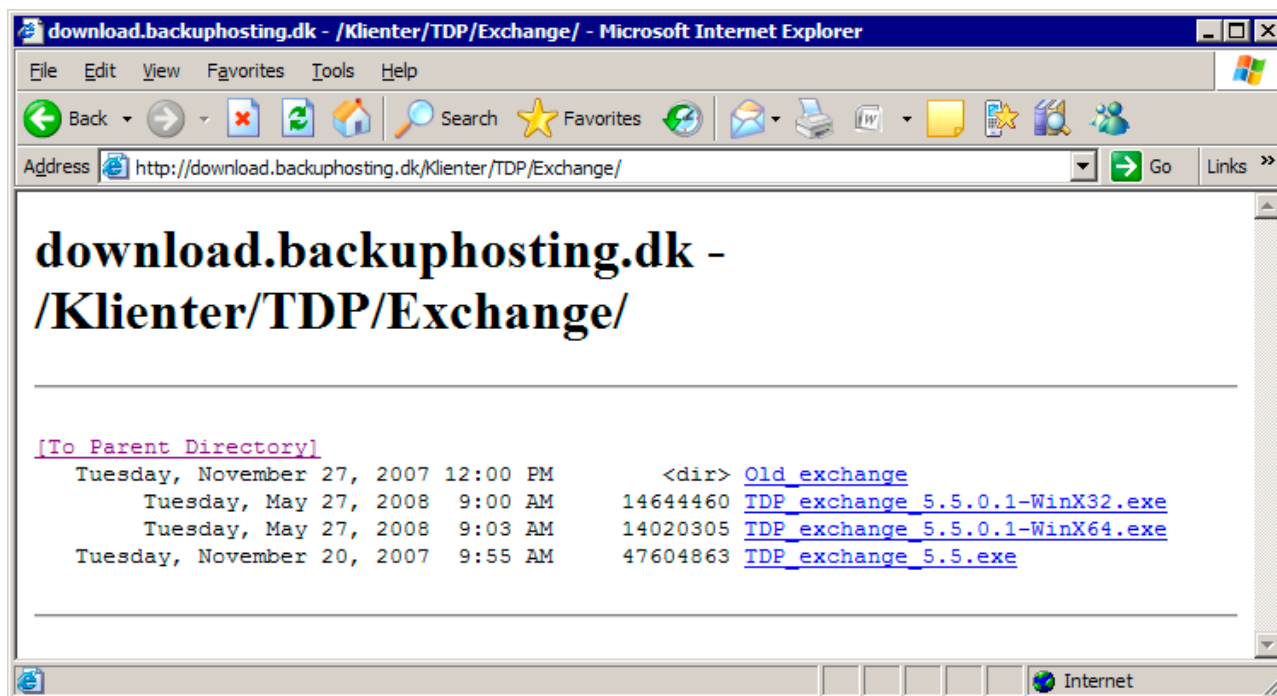
mail@athena.dk
www.athena.dk



athena

Let's free your potential

1. Download klient fra <http://download.backuphosting.dk>, gem i midlertidigt bibliotek. Bemærk at der er en opdatering, så både 5.5 og 5.5.0.1 skal installeres

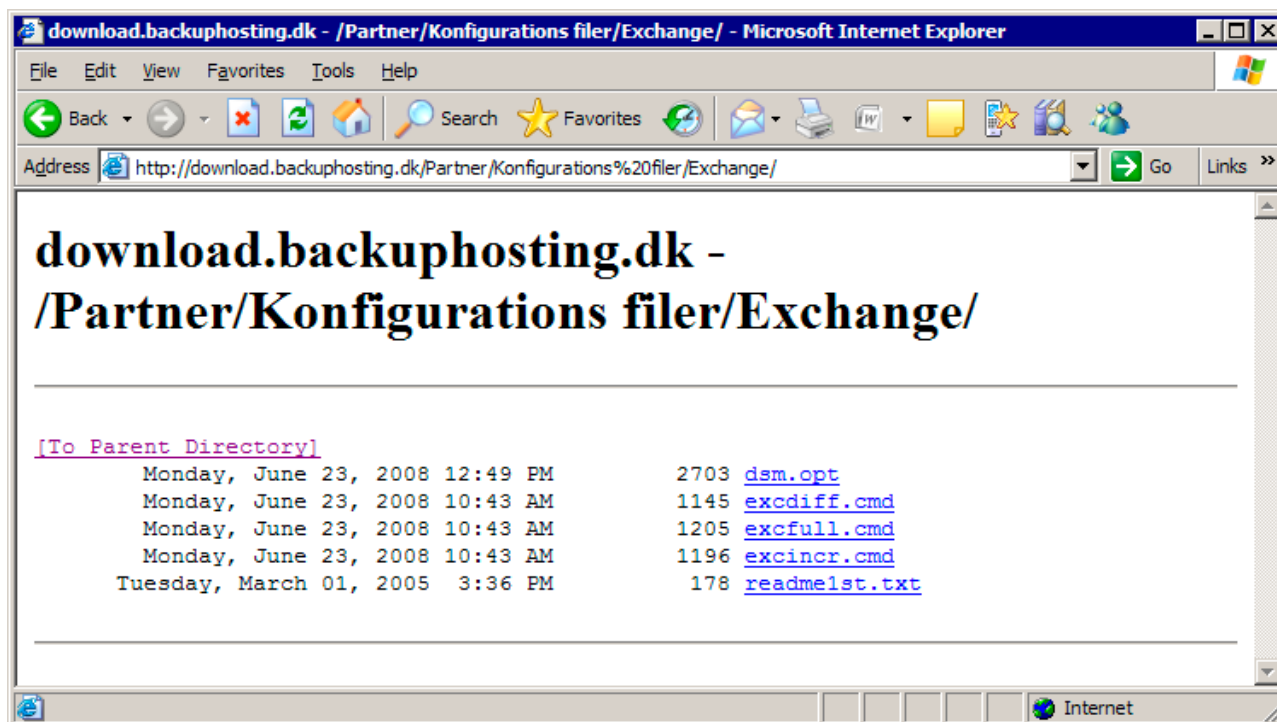




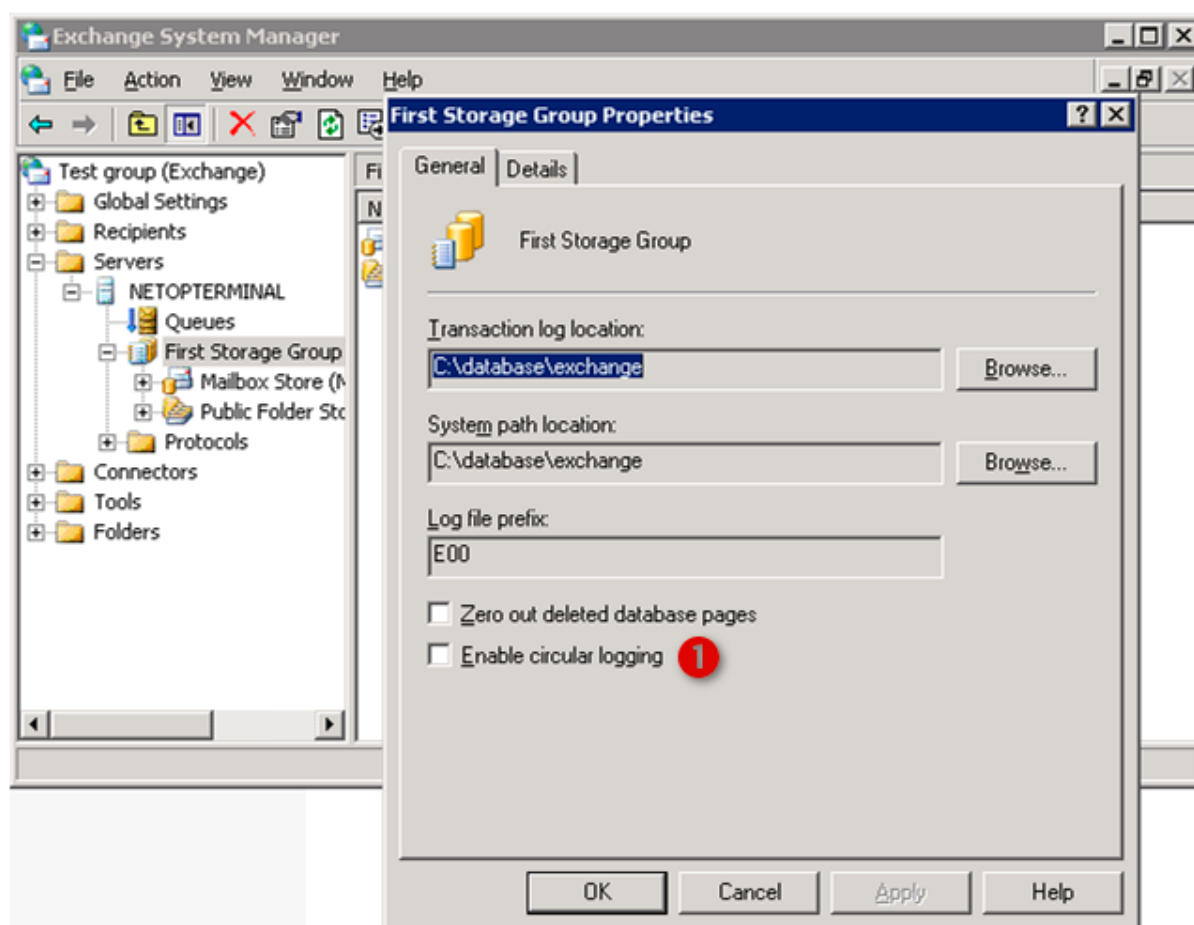
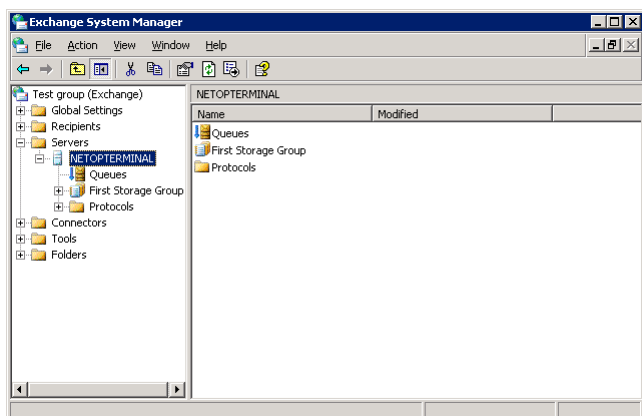
athena

let's free your potential

2. Hent Konfigurations filerne fra <http://download.backuphosting.dk>, gem I midlertidigt bibliotek



3. Start Exchange System manager og check navnet på Exchange server og check at "circular logging" ikke er enableret (højreklik på First Storage Group -> vælg properties) (1). Hele server skal genstartes efter ændring for at den opfatter at "circular logging" er ændret.

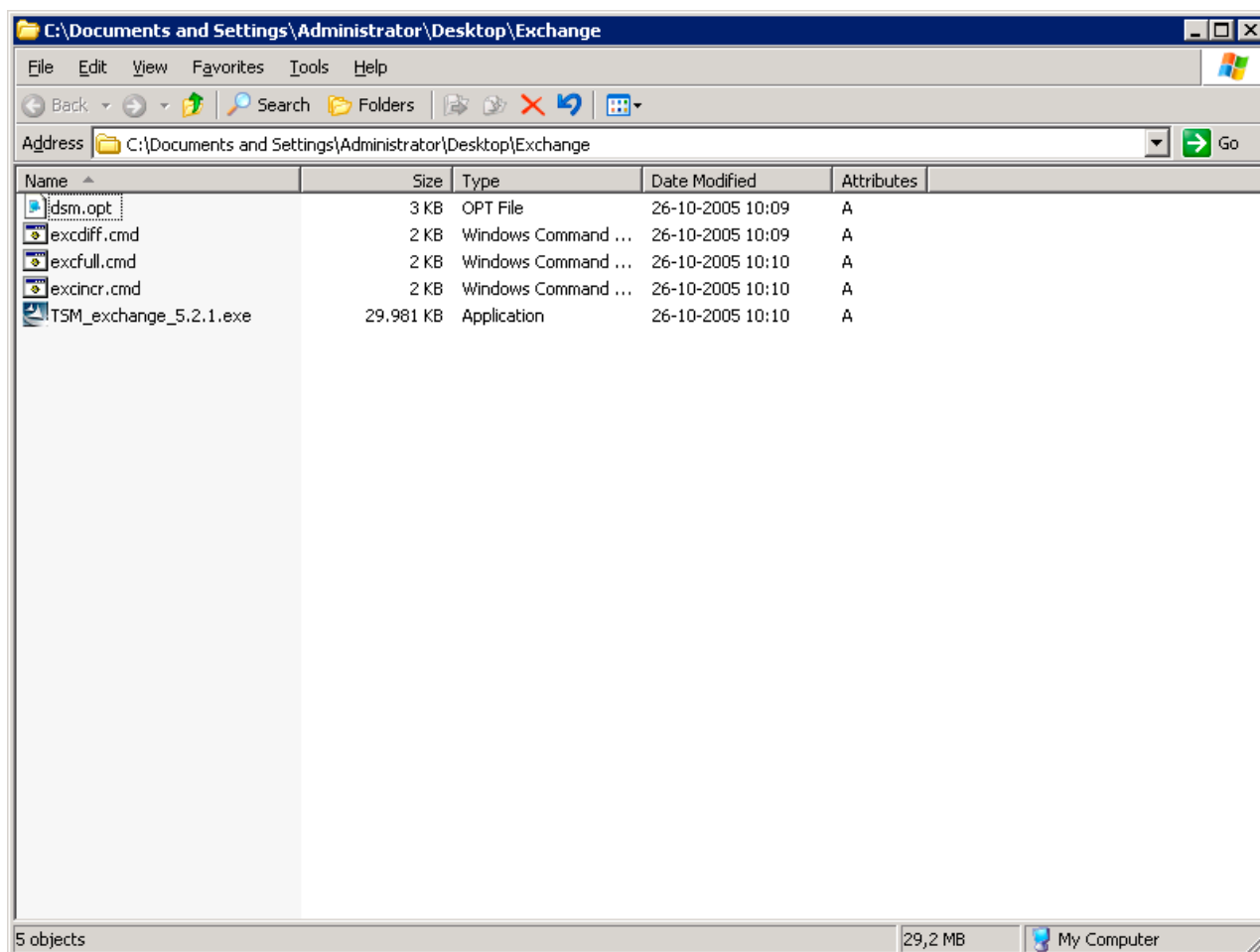




athena

let's free your potential

4. Rediger dsm.opt og cmd filerne med følgende





athena

Let's free your potential

DSM.OPT: Indsæt nodenavn (1), TSM server (2) og Vælg antallet af uger backup skal gemmes i (3) og søg/erstat på "Server_Name" til Exchange serverens navn

```
dsms[1].opt - Notepad
File Edit Format View Help
*****
*
*      Tivoli Storage Manager DSM.OPT File
*
*      DSM.OPT File for Exchange
*
*              BackupHosting
*
*
*
*****
NODEname           NODE?? 1
CLUSTERnode       no
COMPRESSION        On
PASSWORDAccess    Generate

COMMethod          TCPip
TCPPort            1500
TCPServer address  TSM09.BACKUPHOSTING.DK 2
TCPWindowSize      63
TCPBuffsize        32

enableclientcryptkey yes
encryptiontype     AES128

SCHEDMODE          Polling
SCHEDLOGRetention  30
ERRORLOGRetention  30

*** Exchange 2xxx only ***
Include.encrypt \...\*

*** Exchange 2xxx data gemmes i 1 uge
*INCLUDE "Server_Name\...\FULL" EXCHFULL1w365R
*INCLUDE "Server_Name\...\DIFF" EXCHDIFF1w365R
*INCLUDE "Server_Name\...\INCR" EXCHLOG1W

*** Exchange 2xxx data gemmes i 2 uger
*INCLUDE "Server_Name\...\FULL" EXCHFULL2w365R
*INCLUDE "Server_Name\...\DIFF" EXCHDIFF2w365R
*INCLUDE "Server_Name\...\INCR" EXCHLOG2W

*** Exchange 2xxx data gemmes i 3 uger
*INCLUDE "Server_Name\...\FULL" EXCHFULL3w365R
*INCLUDE "Server_Name\...\DIFF" EXCHDIFF3w365R
*INCLUDE "Server_Name\...\INCR" EXCHLOG3W
```



athena

Let's free your potential

EXCFULL.COMD og EXCDIFF.COMDKontroller at installation bibliotek er C: ellers ændret enviroment variables (1) og indtast exchange serverens navn ved /excserver=%Servernavn% (2)

```
excfull.cmd - Notepad
File Edit Format View Help
@ECHO OFF
rem =====
rem          BACKUPHOSTING
rem          Exchange Full Backup
rem =====

rem =====
rem          Her oprettes enviroments variabler
rem =====

set exc_dir="C:\Program Files\Tivoli\TSM\TDPEXchange" 1
cd /d %exc_dir%

rem =====
rem          Her defineres dato & tid for log-filen
rem =====

echo Current date is: >> excfull.log
date /t < NUL >> excfull.log

echo Current time is: >> excfull.log
time /t < NUL >> excfull.log

rem =====
rem          Her tages fuld backup af DIR. & IS,
rem          transactions logs "truncates" efterfølgende
rem =====

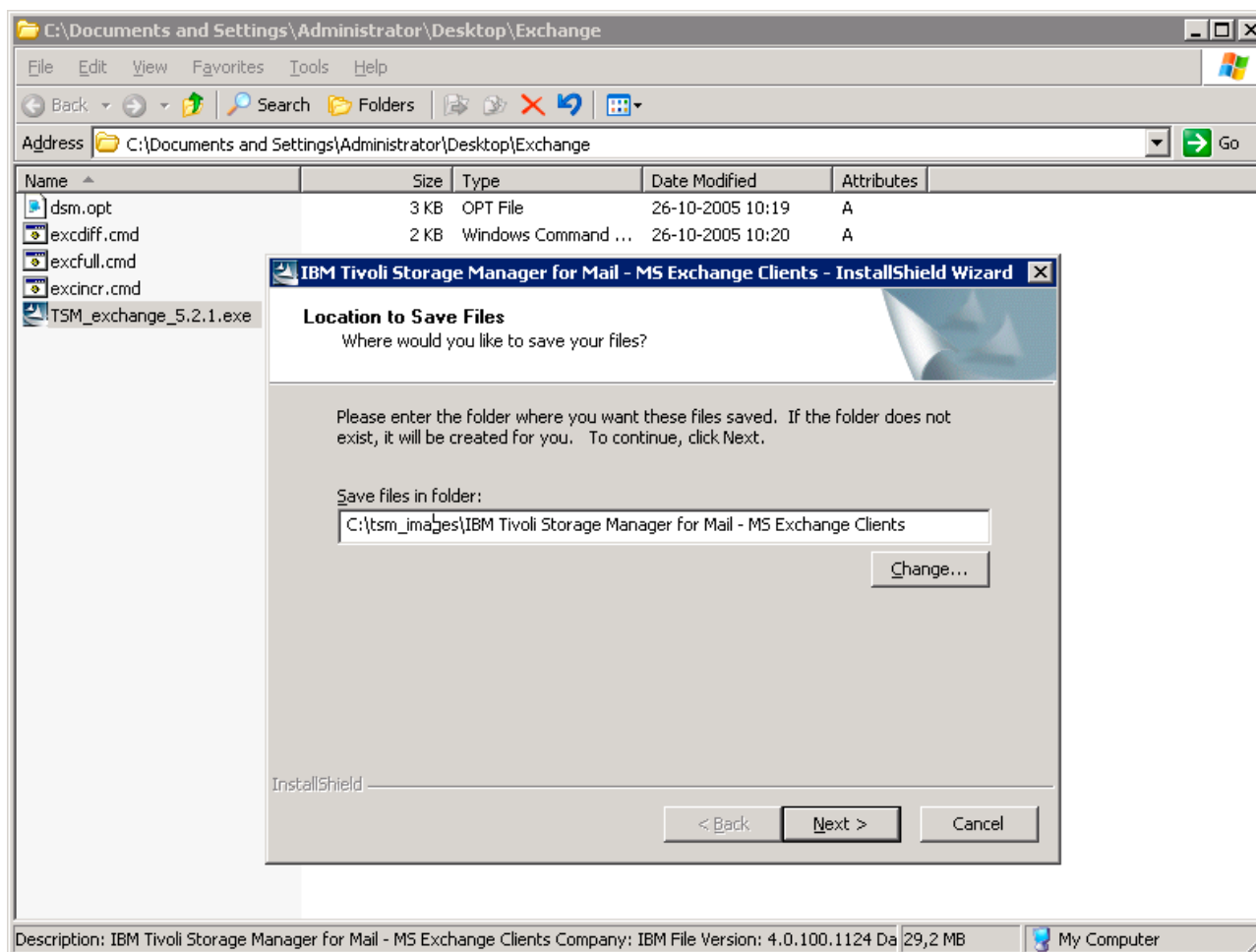
start /B Tdpexcc Backup * full /excserver=%Servernavn% /logfile=excsch.log /Logprune=30 /tsmoptfile=dsm.opt >> excfull.logj 2
```



athena

Let's free your potential

5. Udpak installations filerne i valgfrit bibliotek

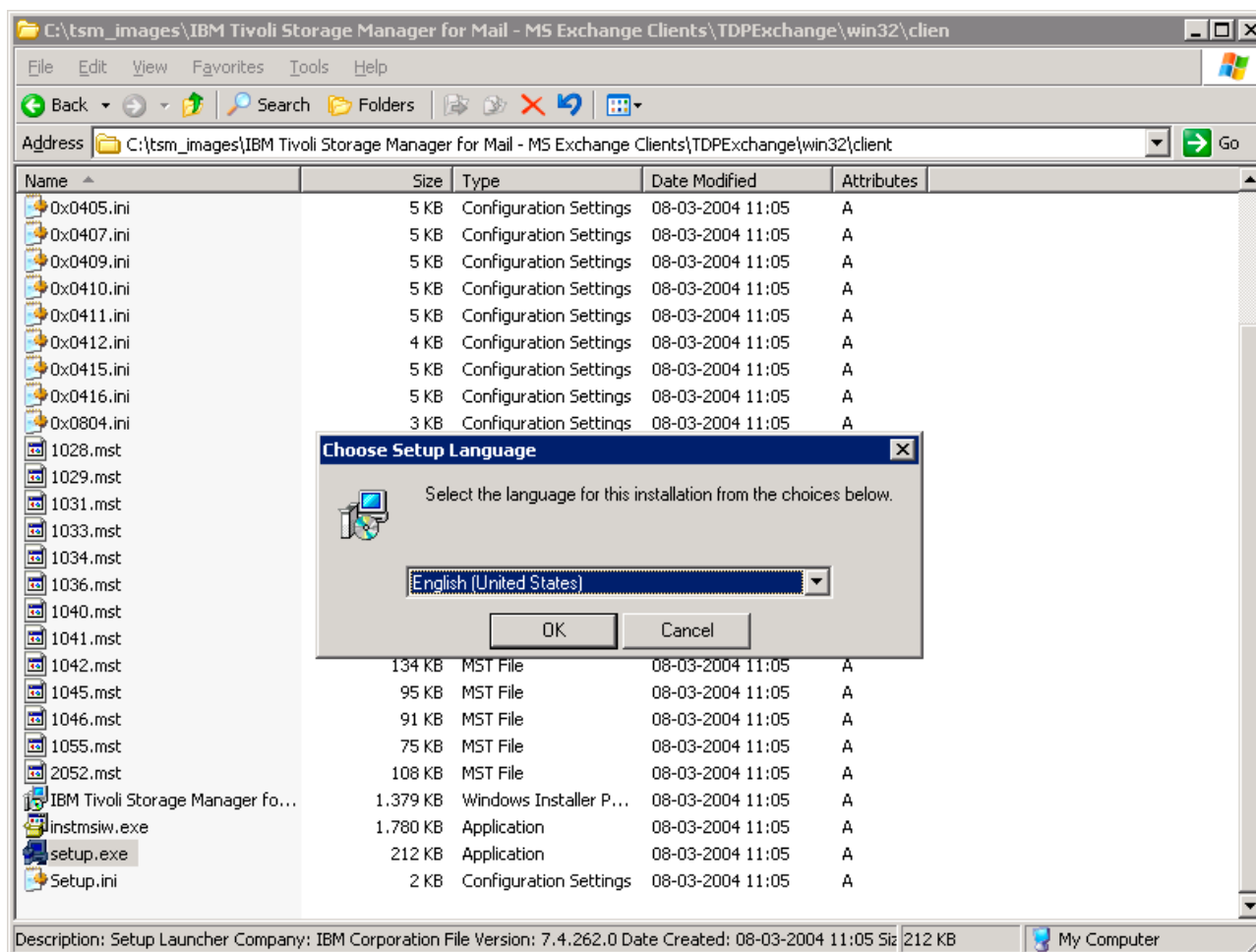




athena

Let's free your potential

6. Kør setup.exe fra det valgfrie bibliotek og installer i TDP-Exchange klienten

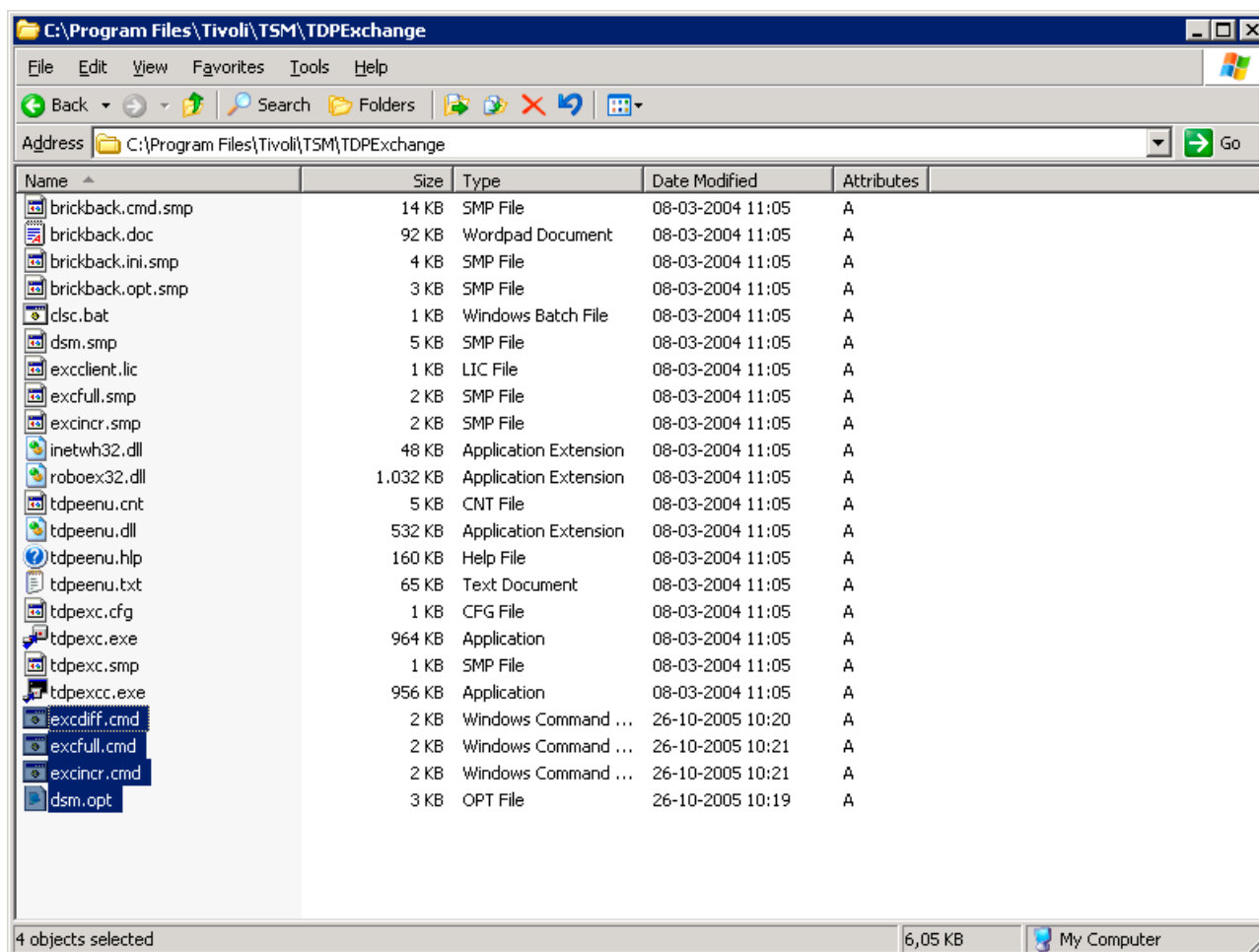




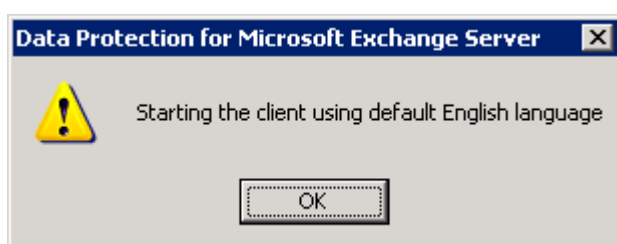
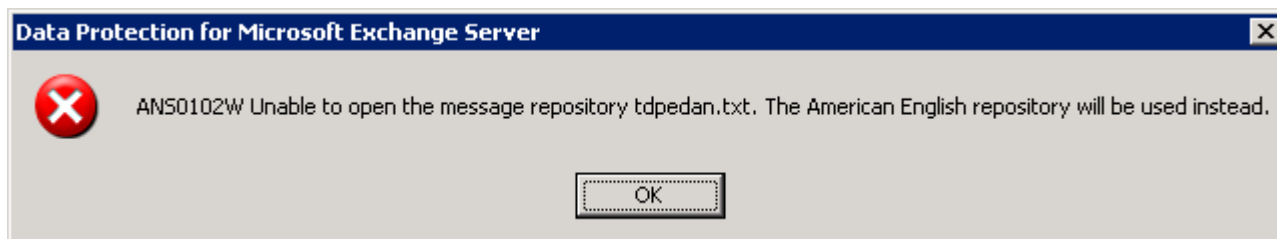
athena

Let's free your potential

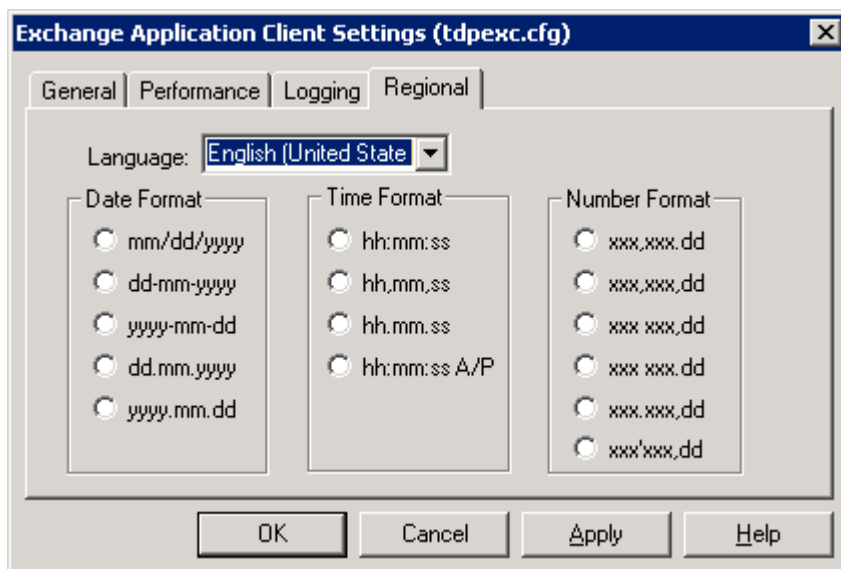
7. Kopier dsm.opt og alle cmd filerne til TDPEXchange biblioteket



8. Start Exchange Gui'en og vælg OK til de næste 2 skærbilleder



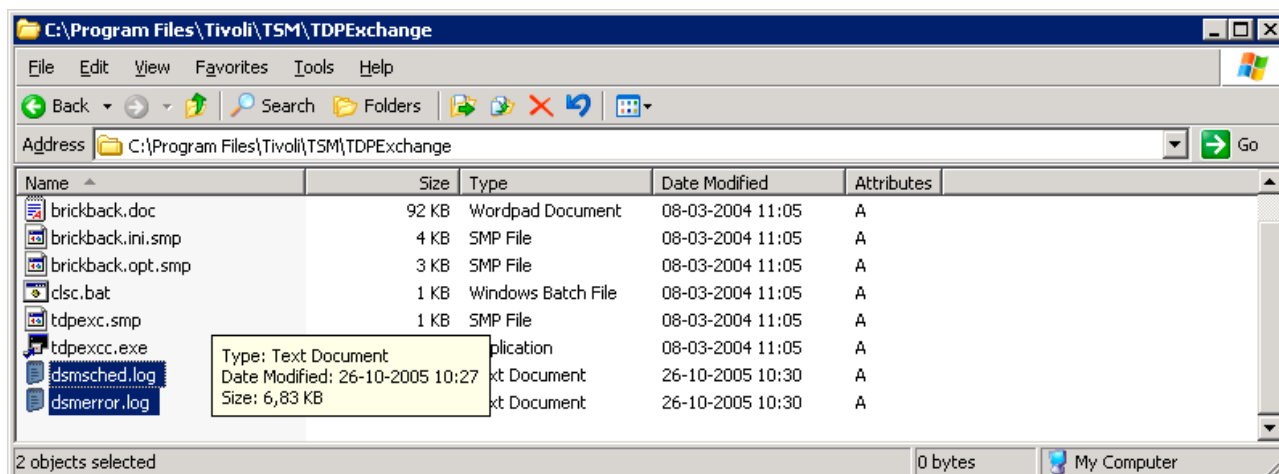
Vælg edit, configuration og gå til Regional og vælg English som Language



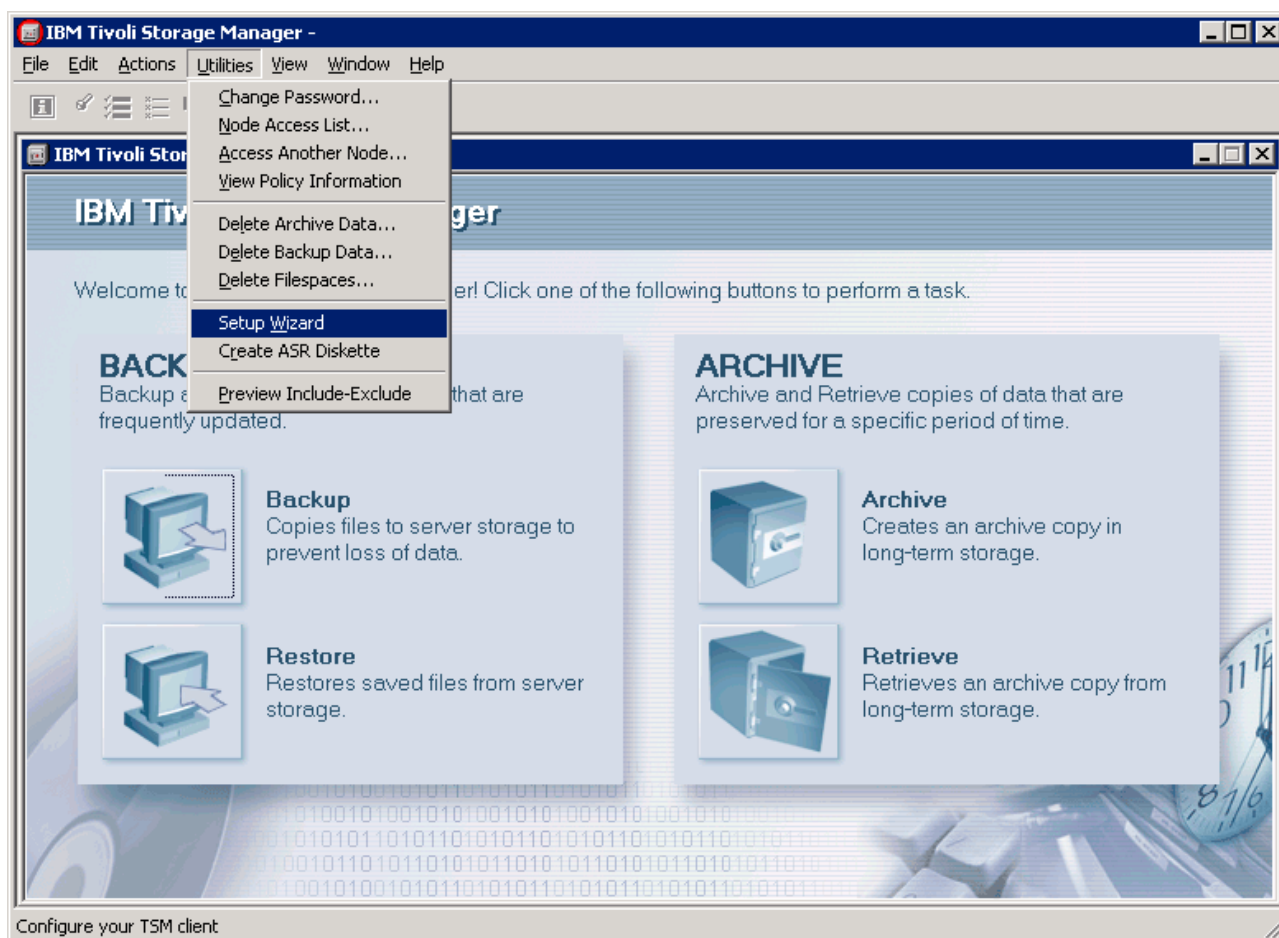


athena
Let's free your potential

9. Opret filerne dmsched.log og dsmerror.log i TDP Exchange biblioteket



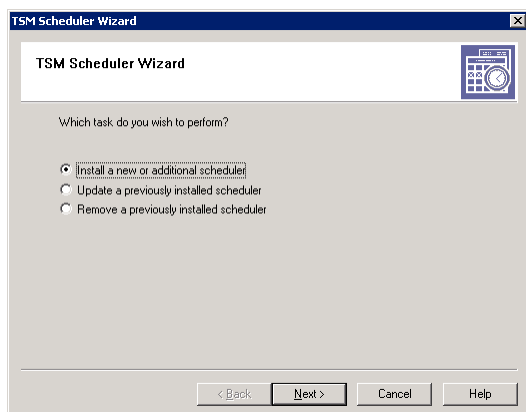
10. Start Backup Archive klienten og vælg utilities, setup wizard



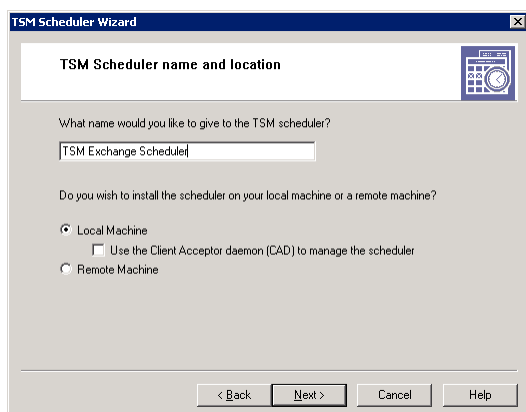


athena
Let's free your potential

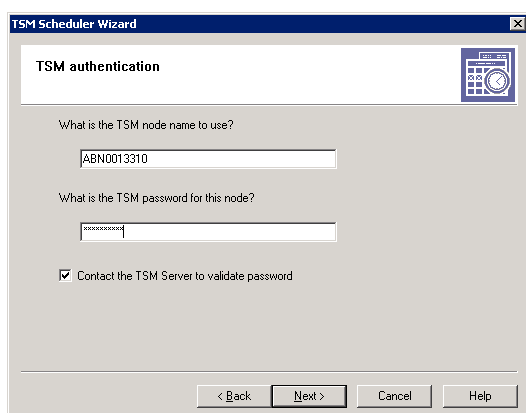
Vælg "Install a new or additional scheduler"



Giv den navnet "TSM Exchange Scheduler"



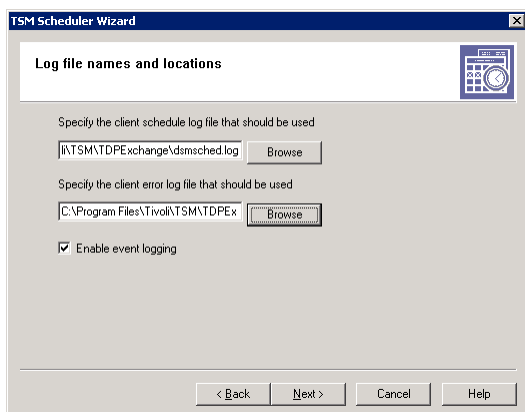
Vælg det rigtige bibliotek til dsm.opt C:\Program Files\TSM\Tivoli\TDPexchange\
Lad kunde indtaste password, som blev ændret i forbindelse med 8.1



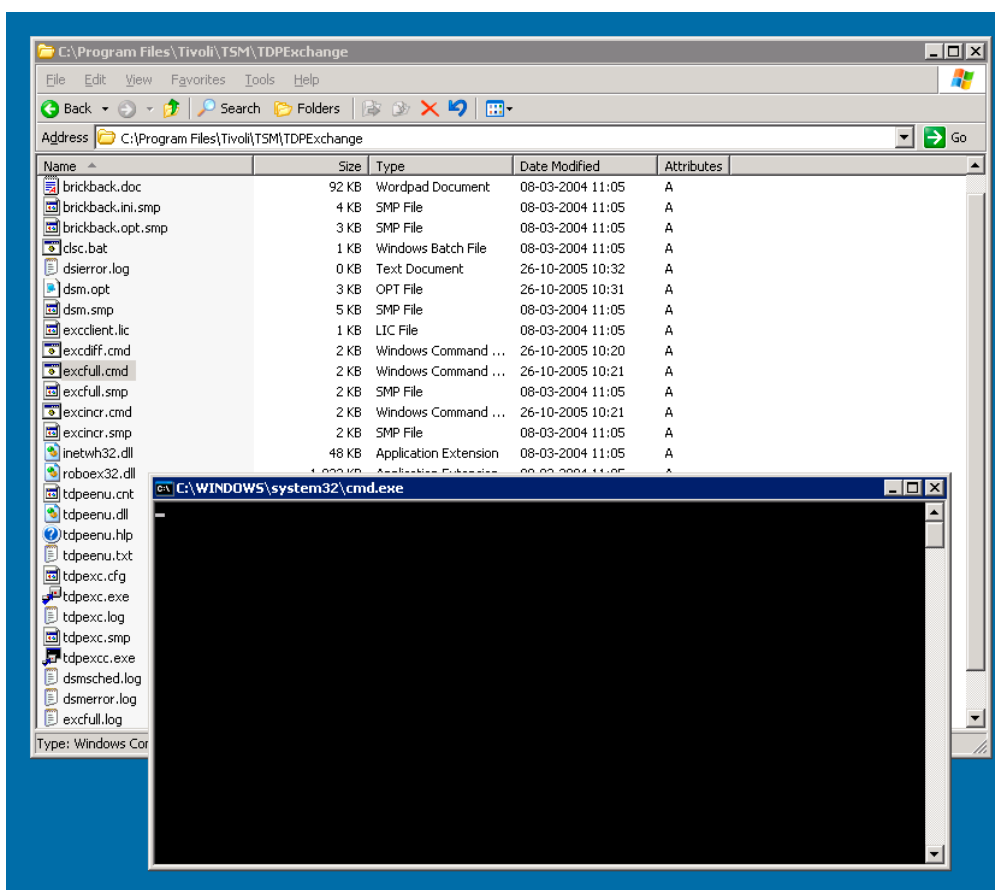


athena
Let's free your potential

Vælg det rigtige bibliotek til samme som dsm.opt



11. check at excfull.cmd ikke fejler, stoppes med Ctrl+C

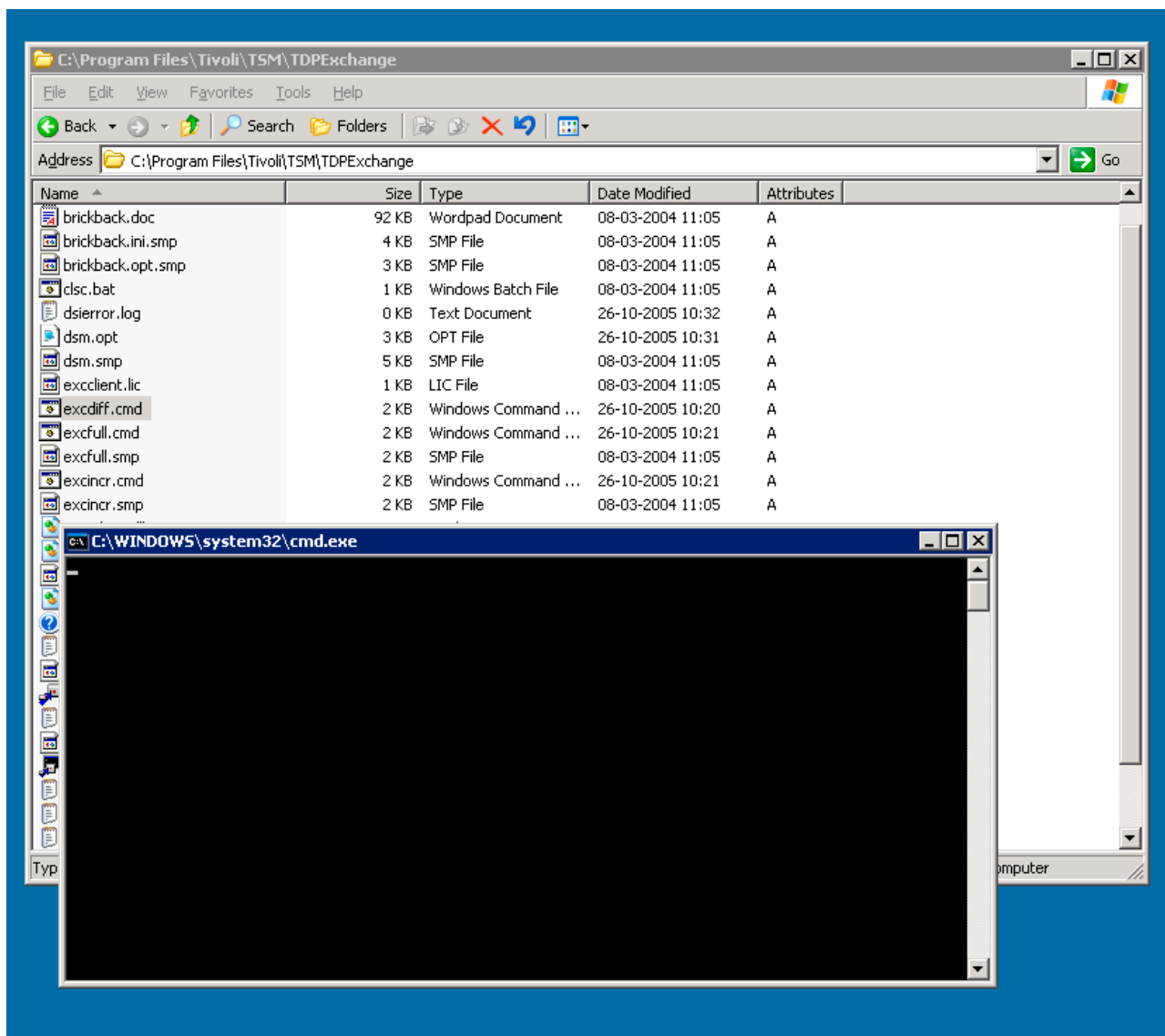




athena

let's free your potential

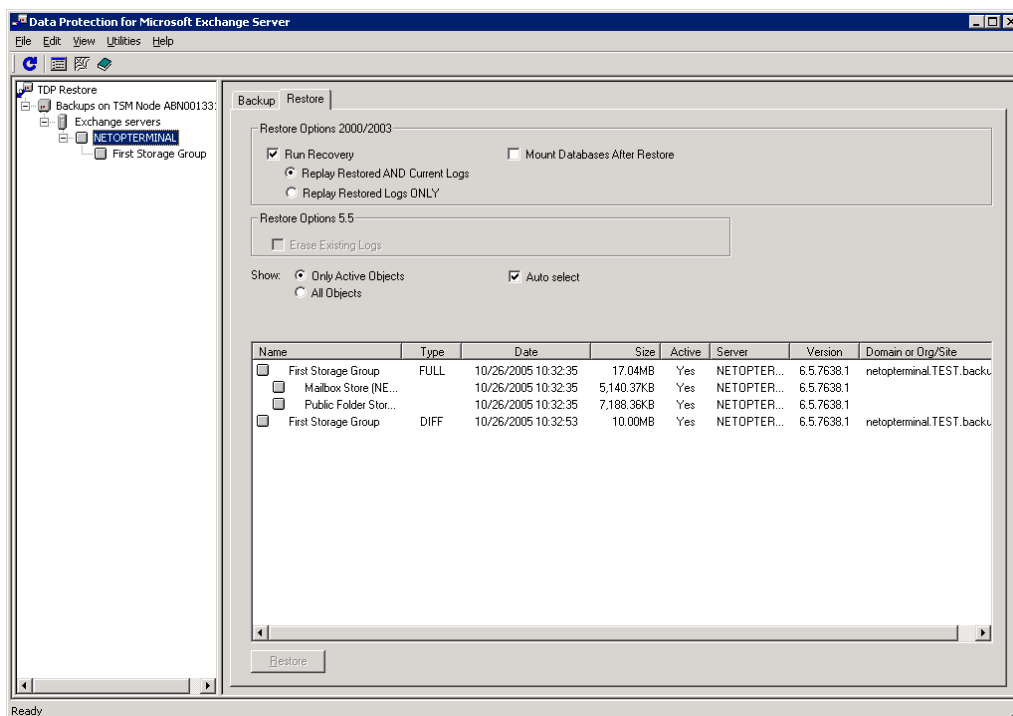
Check excdiff.cmd ikke laver fejl og stop med Ctrl+C



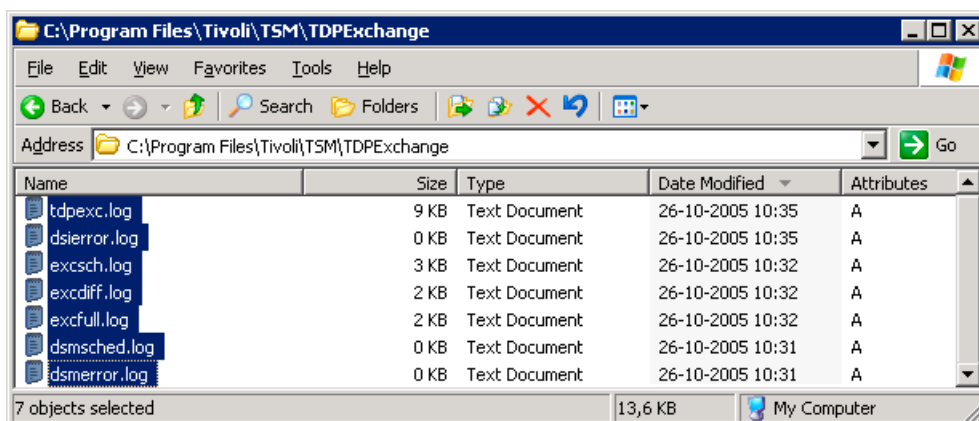


athena
Let's free your potential

12. Hvis ovenstående command filer gennemføres, kan det checkes under restore om der er foretaget både full og differentiell backup



13. Eller check at der er lavet følgende log filer i TDPEXchange biblioteket



Installation er nu gennemført. Backup er ikke funktional før der er gennemført en full backup første gang. Denne kan aktiveres manuelt, eller der må ventes til den køre i først kommende weekend

Med venlig hilsen
ATHENA IT-GROUP